

RACING TOWARDS EXCELLENCE



2024 Quality Summit
May 7-8

Hyatt Regency Lexington
Lexington, Kentucky

Presented by: **HTS** 
your partner
in therapy™



PARTNER-FIRST

Mindset



For Success at Every Level

We at HTS are helping our clients navigate some of the largest challenges from staffing and CMI to census. We are a trusted therapy partner that works diligently to deliver strong rehabilitation programs that bring solutions for financial, clinical, and organizational success.

OUR PARTNERS ARE SUPPORTED WITH SOLUTIONS FOR:

PDPM • Managed Care • CMI • Part B Programming • Census Growth • Campus & Community Wellness

Contact:
Amanda Green



317-523-7358
amanda@htstherapy.com



Healthcare Therapy Services, Inc.
www.htstherapy.com

Connect with Us



2024 Quality Summit May 7-8



Agenda-at-a-Glance

Tuesday, May 7

9:00 am — 11:30 am

KAHCF Board of Directors Meeting

10:00 am — 5:00 pm

Quality Summit & Pre-Conference Registration

10:00 am — 12 pm

Pre-Conference Training

11:30 am — 1:00pm

Director of Nursing Luncheon

12:30 pm — 6:00 pm

Overall Sponsor Exhibits Open

1:00 pm — 2:30 pm

Opening Kick Off and General Session

2:30 pm — 3:00 pm

Food and Beverage Break with Exhibitors

3:00 pm — 4:30 pm

Education Sessions

4:30 pm — 5:30 pm

Reception with the Overall Sponsors

Wednesday, May 8

8:15 am — 9:15 am

Breakfast with speaker

9:30 am — 10:30 am

Educational Session

10:30 am — 11:00 am

Credentialing

11:00 am — 12:30 pm

Annual Business Meeting

*KCAL Board Meeting-TBD

2024 Quality Summit

KAHCF/KCAL is excited to gather our members and guests to downtown Hyatt Regency in Lexington, KY this May! The KAHCF/KCAL Quality Summit brings together long-term care professionals, vendors, and speakers to engage in relationship building opportunities and professional development. Summit attendees will learn how to navigate the ever-changing landscape of senior care with up-to-date educational offerings focusing on survey, leadership, infection control, and workforce to earn valuable CEU credits. You can earn up to six CEUS (includes Pre-Conference) during these two days.

Registration Fees and Policies

**Does not include pre-conference*

All registrations include:

- The opportunity to earn up to 6 CEUs (includes Pre-Conference)
- DON luncheon (register in advance)
- Networking reception with KAHCF/KCAL Platinum Members
- Keynote speaker with breakfast

KAHCF/KCAL MEMBERS

Early Bird Individual Rate-cut off April 19 \$215 per person

Individual Rate \$230 per person

Pre-Conference Session \$40 per person

NON MEMBERS

Early Bird Individual Rate-cut off April 19 \$430 per person

Individual Rate \$460 per person

Pre-Conference Session \$80 per person.

Save costs by
registering
before April 19!
*Sign up
now!*

Register for the Quality Summit on our website!

1. Visit kahcfkcal.org
2. Click "Sign in" on the top right corner on the homepage
3. Sign in using your email address as your username and password. If you do not have one, email kbass@kahcf.org to be added to the system.
4. Click Events/Quality Summit
5. Click "Register Myself" and wait for the page to refresh
6. If registering others from your facility, click "Register Someone Else"
7. Enter their contact information if they are not in our database. If they are, simply find their name in the quick search box.

KAHCF/KCAL is using a QR code to verify attendance at seminars

We are using a unique QR Code for each session to confirm attendance and to complete the session evaluation for each seminar.

- Where to find the QR Code? Displayed on the registration table when you exit the seminar room.
- To receive full credit for attending each session, you are required to complete within 24 hours of each educational session.
- Please note that you will be required to enter your KBN license number.

KAHCF/KCAL CANCELLATION POLICY

Registration Fee: Cancellations received seven (7) workdays prior to the seminar date will receive a full refund for the registration. Cancellations received inside of seven (7) workdays will receive one-half refund. Participants who do not attend will not receive a refund unless prior written notice is given to the KAHCF/KCAL office. All cancellations must be made in writing and sent via email: aporter@kahcf.org

CONTINUING EDUCATION UNIT (CEU)

- Total CEUs that are attainable – 6
- The number of hours participants will receive will be based on sessions attended.
- KAHCF/KCAL is an approved provider of continuing education for the Kentucky Board of Licensure for Nursing Homes Administrators and Kentucky Board of Nursing. To receive continuing education credit, you must complete the entire program. Certificates may be printed once the program evaluation is submitted. Disclaimer Statement: The Kentucky Board of Nursing approval of an individual continuing education provider does not constitute endorsement of program content.
- All other disciplines are encouraged to keep track of their attendance hours and submit them for CE credit to the appropriate agency for their discipline.
- This conference is not NAB approved.

10:00 AM- 12:00 PM

Pre-Conference Session

Registration fee is \$40.00/ per person

CMS & Workforce Transformation in LTC

Sponsored by: Incite Strategic Partners

This seminar will look at the changing environment related to staffing in long term care. It will review strategies to avoid negative regulatory outcomes related to staffing based upon the guidance issued by CMS and delve into CMS findings, establishing a crucial link between staffing and quality. The session will review the minimum staffing standards recommendations, turnover measures, and regulatory challenges, shedding light on the anticipated impact and preparation strategies. The seminar will discuss the staffing-related tags F725 & F726, analyze their implications, and explore mitigation strategies. Participants will gain insights into actionable steps, including updating the Facility Assessment Staffing Plan and utilizing CMS Staffing Toolkits. The seminar presents strategies for cultural change to better meet the needs of the workforce, advocating for a cultural paradigm shift in the approach to staffing and workforce management in long-term care and reinforcing the need for change and a focus on workforce fulfillment to improve current staffing levels, reduce turnover, and increase recruitment.

Presenter: Benita Dickenson, Consultant and CEO

Benray Advisory Group

Sandy Hook, KY

11:30 AM – 1:00 PM

Director of Nursing Networking Luncheon

Sponsored by: Synchrony Health Services

Grab lunch and network with fellow Director of Nurses from long term care facilities. This lunch will give you an opportunity to learn and share with your peers. No charge to attend, however you must register to attend the luncheon.

1:00 PM - 2:30 PM

Kick Off and Opening General Session (#1)

State Survey Process: The Inspector General's Perspective

Sponsored by: HTS

The Kentucky Office of the Inspector General's presentation will cover what surveyors expect and what they find during survey visits. They will address correcting problems identified during the survey including removal of jeopardy and creating a Plan of Correction. Q&A will be available at the conclusion of the session.

Presenters: David T. Lovely,

Acting Inspector General and

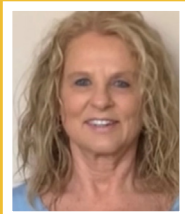
Tricia Steward,

Executive Advisor

Office of Inspector General

Cabinet for Health and Family Services

Frankfort, KY



3:00 PM – 4:30 PM

Session 2 – Checking the Pulse of Your Facility Assessment

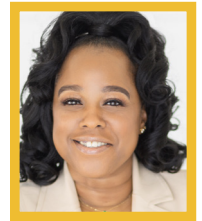
Sponsored by: Incite Strategic Partners

With the proposed final rule having updated requirements to the Facility Assessment, it is important to understand what the Facility Assessment is and make sure your Facility Assessment is comprehensive. Facility Assessments should be updated as your facility changes and AT LEAST ANNUALLY. This session will discuss the components of the facility assessments and how to ensure your assessment reflects an accurate picture of your facility.

Presenter: Veronica Caesar Birch, MBA, BSN, LNHA, RN-BC

GEM Healthcare Consulting LLC

Carrollton, TX



Session 3 – Building a Defensible Medical Chart and How Not to Ruin it with Emails

Sponsored by: Dzenitis Newman, PLLC

This session will provide an explanation of what a medical chart is for litigation purposes. Help decision makers understand the implication of emails, text messages, other messaging apps and how the information involved can be used as evidence and even incorporated into a "medical record". In litigation, email discovery is now a given and will be compared to the medical record. This session is for the Nursing Home Administrator or Director of Nursing or anyone who emails within a facility or regional office.

Presenter: Emily Newman, ES, Partner

Dzenitis Newman, PLLC

Louisville, KY



Session 4 – Providing Unwanted Care

Sponsored by: Medline

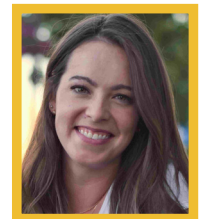
This course focuses on how to provide care for individuals experiencing brain changes who are unwilling to accept help or support. Specifically, we will explore the difference between denial and anosognosia, where the latter refers to a lack of awareness of one's own deficits. Through case studies and real-life scenarios, we will examine strategies for supporting individuals in need of supervision or assistance without causing confrontation. The course will emphasize a non-confrontational approach to caregiving and provide practical tips and tools for how to navigate situations where an individual is resistant to care. Participants will learn how to communicate effectively with someone who may not understand their own limitations and how to provide support in a way that preserves their dignity and autonomy.

Presenter: Adria Thompson

Speech Language Pathologist and Dementia Educator

Be Light Care Consulting

Corbin, KY



Education Wednesday

8:15 AM- 9:15 AM Membership Breakfast



Join us for an early breakfast featuring the radio voice of the University of Kentucky. Tom Leach has spent 26 years calling football games for the Big Blue Nation and 22 years narrating basketball for the Wildcats. Leach hosts his own statewide radio show, "The Leach Report," and has been named Kentucky Sportscaster of the Year six times, having spent a total of 46 years broadcasting in the Bluegrass State. Leach has also taken his talent to the track by broadcasting thoroughbred races at Keeneland and helping provide national coverage of the Triple Crown races, earning two Eclipse Awards for his work.

Presenter: Tom Leach "The Voice of the Wildcats"
Tom Leach Productions
Lexington, KY

9:30 AM – 10:30 AM

Session 5— Addressing Social Isolation in Long Term Care

Sponsored by: Incite Strategic Partners



Social isolation is a critical social determinant of health that can significantly impact an individual's physical and mental well-being. Social determinants of health are the social and economic conditions in which people live, work, and age, and they can have a profound influence on a person's overall health outcomes. Social isolation refers to a lack of meaningful

social connections and engagement with others, which can manifest in various ways, such as limited social networks, minimal social support, or a lack of participation in social activities. The attendees will be able to: Identify the factors contributing to social isolation, develop effective intervention strategies, enhance communication and relationship-building skills and design personalized care plans based on comprehensive assessments of individual resident needs and preferences.

Presenter: Veronica Caesar Birch, MBA, BSN, LNHA, RN-BC
GEM Healthcare Consulting LLC
Carrollton, TX



Session 6—Optimizing Medication Use to Reduce Residents Risk: Enhancing Staff Awareness **Sponsored by: Incite Strategic Partners**

Pharmacological treatment is indicated to address specific diseases and quality of life, as well as and extend life but can subsequently result in multiple medications being prescribed in residents with complex chronic health conditions and advanced age. The use of multiple medications referred to as polypharmacy is linked to drug therapy-related issues such as drug interactions, non-adherence, or adverse effects like drug toxicity, falls with injury, or delirium. These issues compound leading to higher costs of care for the resident and the health care system. The goal of this presentation is to review polypharmacy-related issues in the long term care facilities, identify opportunities for deprescribing and treatment optimization as it relates to certain drugs or drug classes, discuss how to engage staff in deprescribing efforts, and review existing deprescribing resources available to the long term care facilities.

Presenters: Daniela Moga, M.D., Ph.D, FISPE and Muhammad Babar, M.D., MBA, MSC
University of Kentucky and Kentucky Department for Medicaid Services
Frankfort, KY



Session 7 — Mastering QAPI Excellence: A Step-by-Step Guide to Building and Sustaining a Robust Quality Assurance and Performance Improvement Program **Sponsored by: Alliant Health Solutions**

This session will review the elements necessary to have a strong Quality Assurance and Performance Improvement (QAPI) program and walk attendees through each step of the process from reviewing data, having an effective root cause analysis (RCA), implementing a performance improvement project (PIP) and tracking their progress. At the end of the session attendees will have an example from start to finish to refer to once back at their facility.

Presenter: Kathryn Pass
Kentucky State Quality Manager
Alliant Health Solutions



KAHCF/KCAL –2024-2025 Board Elections

Sponsored by: MedCare Pharmacy

11:00 AM—Special Business Meeting

KAHCF/KCAL registered delegates to vote on the KAHCF/KCAL By-law changes.

11:15 AM—Annual Business Meeting

KAHCF /KCAL registered delegates to elect your new KAHCF and KCAL Board of Directors and approve your Association's 2024-25 Budget.

Note: All members are welcome to attend the Special Business Meeting and the Annual Business Meeting. Only registered delegates will be eligible to vote at these meetings. Deadline to complete delegate forms is May 1.

Each member facility is allowed one delegate representative from each facility/corporation. No one person can be a delegate for more than one facility or corporation.

RACING TOWARDS EXCELLENCE



2024 Quality Summit May 7-8



Hyatt Regency Lexington -Hotel
401 W. High Street
Lexington, KY 40507

Hotel room rates:
\$150-single-quate rate
Hotel reservation cut off date: April 15
How to make your hotel reservations:

April 15:
Reservation
deadline
*Sign up
now!*

[Click here to make hotel reservation.](#)

Call in reservations-1-800-233-1234, ask for CODE -G-KHCF
All participants are required to make their reservations at Hyatt Regency Lexington hotel within the KAHCF/KCAL block of rooms by using the link below: Reservations made at other hotels or through discounted online services damages the ability of the KAHCF/KCAL to meet its contractual obligations with the Hyatt Regency Lexington.

Each individual guest can make their own reservation by calling or going online.

Meet and Mingle with Overall Sponsors **Tuesday, May 7** **4:30–5:30 pm**

Wind down after Tuesday’s sessions with us! All attendees, overall sponsors, and sponsors are encouraged to attend and will enjoy a complimentary beverage and appetizers.

Wednesday, May 8 **KAHCF/KCAL – Board Elections** *Sponsored by: MedCare Pharmacy*

10:30 AM – 11:00 AM Credentialing of the Delegates

11:00 AM—Special Business Meeting
KAHCF/KCAL registered delegates to vote on the KAHCF/KCAL By-law changes.

11:15 AM—Annual Business Meeting
KAHCF /KCAL registered delegates to elect your new KAHCF and KCAL Board of Directors and approve your Association’s 2024-25 Budget.

Note: All members are welcome to attend the Special Business Meeting and the Annual Business Meeting. Only registered delegates will be eligible to vote at these meetings. Deadline to complete delegate forms is May 1.

Each member facility is allowed one delegate representative from each facility/corporation. No one person can be a delegate for more than one facility or corporation.

INCITE

Doing Group Purchasing Differently

Exclusive Group Purchasing Partner of KAHCF/KCAL

[Scan to learn more](#) - start saving with Incite



incitesp.com/kentucky

RACING TOWARDS EXCELLENCE



2024 Quality Summit
May 7-8



Limited registrations available
Sign up now!

Thank you to our Platinum Member Partners
Overall Sponsors

